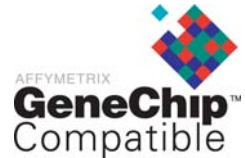


## Your new LIMS Solution for Microarray Experiments

An interactive, user-friendly and adaptable Laboratory Information Management System for easy handling of gene expression data.

**ArrayHub™** is a flexible database application that stores, organizes and tracks the descriptive information for all tasks performed in microarray experiments, such as experimental factors, hybridizations, samples, labeled extracts, slides, images and files. The application applies a user-level sharing philosophy with full MIAME's guidelines compliancy. The **ArrayHub's Core Facility Module™** is a flexible web interface for users to submit microarray service requests to core facility labs.



### Key Features

#### > Fully MIAME compliant

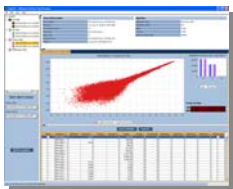
**ArrayHub™** relational data model is implemented according to MIAME guidelines and it can be easily extended using templates. Experiments can be exported and imported in MAGE-ML format.

#### > Core Facility Web module

The Core Facility Web module provides a framework which enables **ArrayHub™** LIMS Organizations to provide microarray experiment services to external users and organisations.



Architecture overview



Affymetrix viewer

#### > Affymetrix® GeneChip-compatible™ Data Management Software

**ArrayHub™** provides the visualization and parsing capabilities for Affymetrix binary files (.DAT, .CEL, .CHP), integrates the Affymetrix GeneChip® Operating System (GCOS), the Affymetrix GeneChip® Command Console as well as the NetAffx™ Analysis Center in order to keep your Affymetrix annotation files and chip definition files automatically up to date.

#### > Support for multiple instruments data file formats

**ArrayHub™** supports Affymetrix GeneChip® brand platform, Applied Biosystems 1700 Chemiluminescent Microarray Analyzer, Agilent, ScanAnalyze, GenePix, cDNA, Oligonucleotide, and custom microarray platforms. It enables to create and define parsing protocols to support any text file format.

#### > Seamless integration with third-party analysis tools

**ArrayHub™** allows an integration of preprocessing tools like R-scripts and Bioconductor as well as analysis tools like Spotfire, Integromics analytical Guides, Agilent's GeneSpring, etc.



Core facility web interface

#### > Workflow oriented data submission

The interactive workflow panel helps to submit/view data depending on the experiment type that it's being considered. It enables users to create their own workflows and monitoring the progress of the experiment.

#### > Users Collaboration Capability

The user-level sharing philosophy allows read and write permission management and multi-disciplinary teams supporting.



Workflow panel

For more Information: [www.integromics.com](http://www.integromics.com)

Phone: (+34) 91 585 5305

Fax: (+34) 91 585 5315

Email: [info@integromics.com](mailto:info@integromics.com)

ArrayHub™ is an Integromics, S.L. product. All Rights Reserved 2007.